

**RACK ASSEMBLY INSTRUCTIONS**

- READ ALL INSTRUCTIONS FULLY BEFORE ATTEMPTING TO INSTALL OR SET UP RACK.
- (A) CHECK RECEIVED PARTS AGAINST PARTS LIST BELOW.
- (B) RACK LOCATION SHOULD BE:
  1. AWAY FROM OUTSIDE SOURCES OF HEAT (DIRECT SUN-LIGHT, RADIATORS, STEAM PIPES ETC.)
  2. ON LEVEL GROUND.
  3. EASILY ACCESSIBLE FOR CELL READINGS AND WATER ADDITIONS, IF APPLICABLE (PL BATTERIES).
- (C) MARK LOCATION ON FLOOR AND POSITION FRAMES.
- (D) INSTALL BRACES ON TO FRAMES AND HAND TIGHTEN NUTS.
- (E) INSTALL RAILS IN APPROPRIATE POSITION FOR BATTERY SYSTEM TO BE USED AND HAND TIGHTEN NUTS.
- (F) CHECK THAT RAILS AND BRACES ARE IN CORRECT POSITION AND SQUARE RAIL WITH FRAME.
- (G) INSTALL RAIL INSULATION ON BOTH INSIDE SURFACES OF THE RAIL MAKING SURE THEY MEET AT THE BEND IN THE RAIL.
- (H) TIGHTEN ALL NUTS TO A 30 FT/LB TORQUE VALUE STARTING WITH BRACES FIRST, THEN RAILS.
- (I) \*BOLT FRAMES TO FLOOR. FOR UBC 97 ZONE FOUR CERTIFIED RACKS, A MINIMUM OF 6" OF SPACING IS NEEDED AROUND ALL SIDES OF RACK.
- (J) USE MOUNTING HOLES #3 & 4 FOR PL-7, PL-8, PL-10, PL-11, PL-15 & PL-27 BATTERIES WHEN INSTALLING CELLS LENGTHWISE. OTHER MOUNTING HOLES MAY BE USED FOR OTHER ARRANGEMENTS WHEN SMALLER LENGTHS OF RACKS ARE REQUIRED.
- (K) ALL MOUNTING SLOTS ARE 1/2" X 1" AND SUPPLIED WITH 3/8" HARDWARE KIT.
- (L) ALL RACKS ARE MADE OF STEEL ANGLE SUPPORTS AND ARE PAINTED WITH A TEXTURED IBM WHITE ELECTROSTATIC POWDER COAT.

**NOTE:** A MINIMUM OF 6" OF SPACE IS NEEDED AROUND EACH SIDE OF RACK IN ORDER TO MEET UBC 97 SEISMIC CRITERIA.

SEISMIC ZONE	*ANCHORING COMPONENTS	SEISMIC SUPPORT BEAMS
1	4-#1/2"x6" ROD WITH E12 EPOXY CAPSULES	NOT REQUIRED
2A	4-#1/2"x6" ROD WITH E12 EPOXY CAPSULES	REQUIRED
2B	4-#1/2"x6" ROD WITH E12 EPOXY CAPSULES	REQUIRED
3	4-#1/2"x6" ROD WITH E12 EPOXY CAPSULES	REQUIRED
4	6-#5/8"x9" ROD WITH E12 EPOXY CAPSULES	REQUIRED

\*SEE ANCHORING INSTRUCTION DRAWING ANC-9001.

**HARDWARE KIT: HK-0008**

16	1/2" X 1 1/2" HEX HEAD SCREW	1
15	1/2" FLAT WASHER	6
14	1/2" SPLIT LOCK WASHER	5
13	1/2" HEX NUT	5
12	1/2" X 1 1/4" HEX HEAD SCREW	4
11	3/8" SPLIT LOCK WASHER	21
10	3/8" HEX NUT	21
9	3/8" X 1 1/2" HEX HEAD SCREW	5
8	3/8" FLAT WASHER	30
7	3/8" X 1" COUNTERSUNK FLAT HEAD SCREW	16
NO.:	DESCRIPTION:	QTY.:

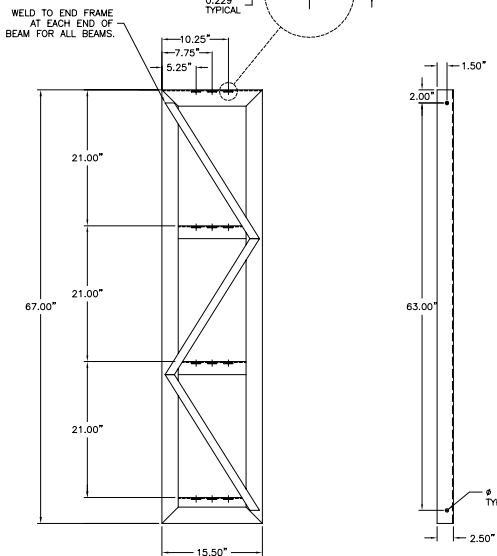
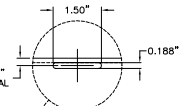
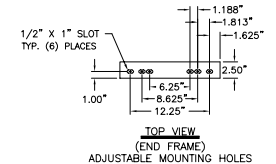
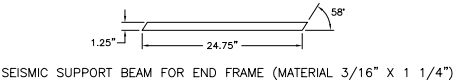
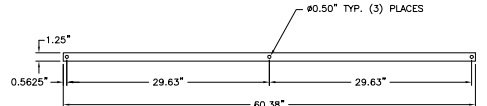
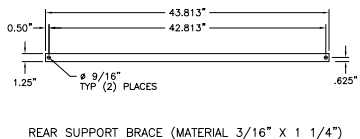
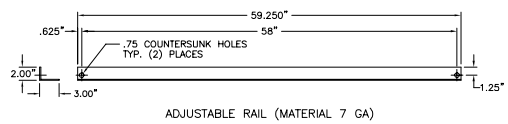
6	SEISMIC END FRAME BEAM	6	RB6074-4T-SSE
5	SEISMIC SUPPORT BEAMS	2	RB60-4T-SSB
4	BATTERY RAIL INSULATION KIT	1	RB60-4T-BRI
3	ADJUSTABLE BATTERY RAILS	8	RB60-4T-ABR
2	REAR SUPPORT BRACE	4	RB60-4T-B
1	END FRAME	2	RB6074-4T-RF
NO.:	DESCRIPTION:	QTY.	PART NO.

REVISIONS			DATE:
NO.	DATE	BY	11/29/2016
D	5/28/98	ANT M.	SCALE:
E	2/14/00	ANT M.	NONE
F	3/20/00	ANT M.	DRAWN BY:
G			DAN
H			NOT VALID UNLESS APPROVED BY:
I			



BR60-4T ASSEMBLY DRAWING  
FOUR TIER SEISMIC ZONE 1-4  
CERTIFIED BATTERY RACK

DRAWING NO.:  
**BR60-4T**



**FRAME ASSEMBLY (MATERIAL 10 GA)**

