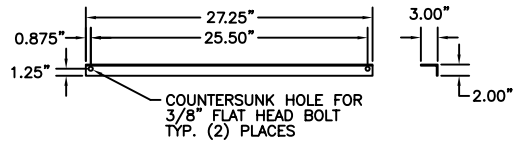
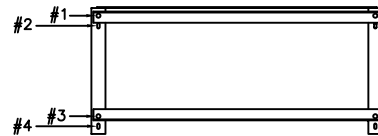


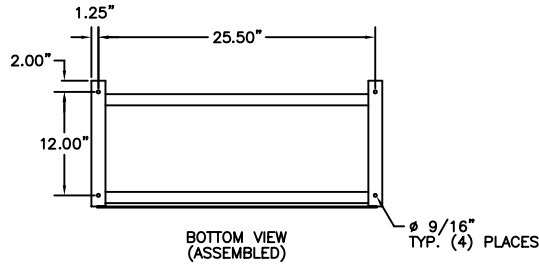
RACK ASSEMBLY INSTRUCTIONS



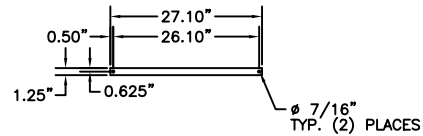
ADJUSTABLE BATTERY RAIL (7 GAUGE)



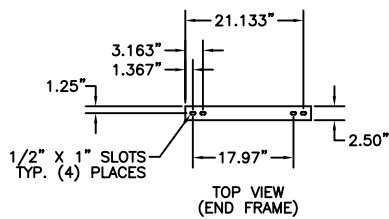
TOP VIEW (ASSEMBLED)



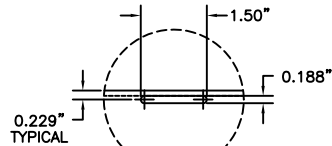
BOTTOM VIEW (ASSEMBLED)



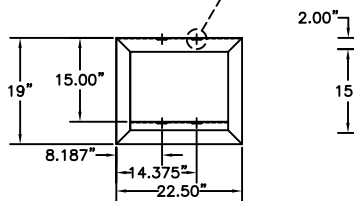
REAR SUPPORT BRACE (3/16\"/>



TOP VIEW (END FRAME)

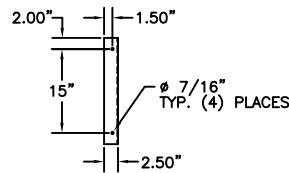


0.229\"/>

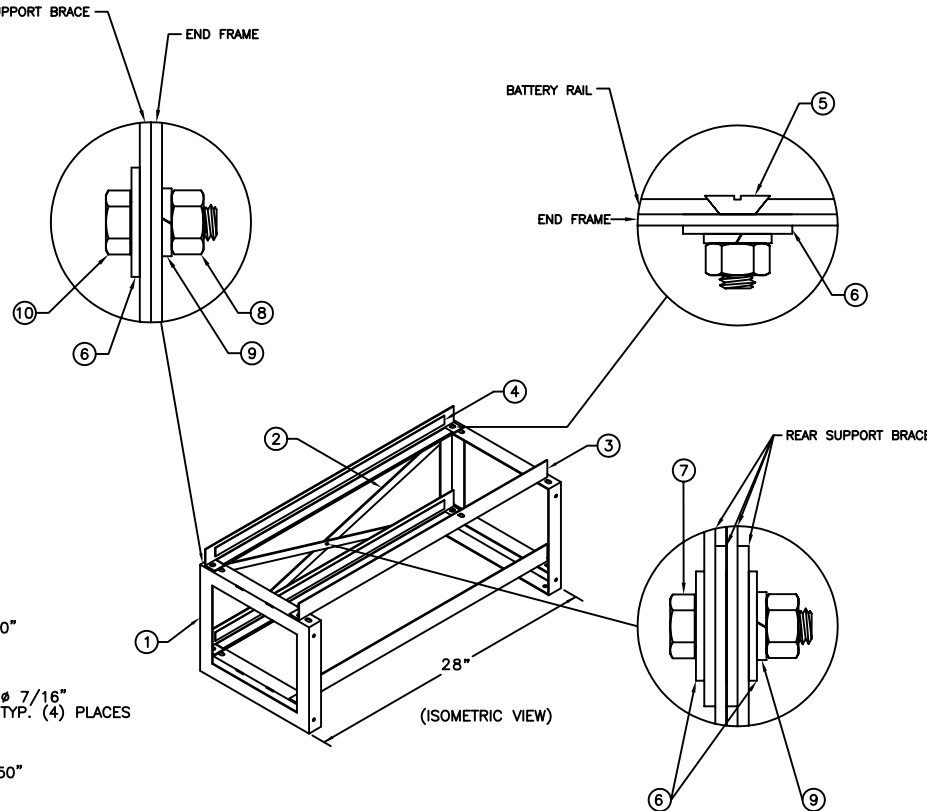


SIDE VIEW (END FRAME)

FRAME (10 GA STEEL)



BACK VIEW (END FRAME)



(ISOMETRIC VIEW)

- READ ALL INSTRUCTIONS FULLY BEFORE ATTEMPTING TO INSTALL OR SET UP RACKS.
- (A) CHECK RECEIVED PARTS AGAINST PARTS LIST BELOW.
- (B) RACK LOCATION SHOULD:
 1. AWAY FROM OUTSIDE SOURCES OF HEAT (DIRECT SUN-LIGHT, RADIATORS, STEAM PIPES ETC.)
 2. ON LEVEL GROUND.
 3. EASILY ACCESSIBLE FOR CELL READINGS.
- (C) MARK LOCATION ON FLOOR AND POSITION FRAMES.
- (D) INSTALL BRACES ON TO FRAMES AND HAND TIGHTEN NUTS.
- (E) INSTALL RAILS IN APPROPRIATE POSITION FOR BATTERY SYSTEM TO BE USED AND HAND TIGHTEN NUTS. ALL RAILS ARE TO BE INSTALLED ON THE #1 & #3 HOLES, AS SHOWN IN THE TOP VIEW.
- (F) CHECK THAT RAILS AND BRACES ARE IN CORRECT POSITION AND SQUARE RAIL WITH FRAME.
- (G) INSTALL RAIL INSULATION ON BOTH INSIDE SURFACES OF THE RAIL MAKING SURE THEY MEET AT THE BEND IN THE RAIL.
- (H) TIGHTEN ALL NUTS TO A 30 FT/LB TORQUE VALUE STARTING WITH BRACES FIRST, THEN RAILS.
- (I) *BOLT FRAMES TO FLOOR. FOR UBC 97 ZONE FOUR CERTIFIED RACKS, A MINIMUM OF 6\"/>

NOTE: A MINIMUM OF 6\"/>

SEISMIC ZONE	*ANCHORING COMPONENTS	SEISMIC SUPPORT BEAMS
1	4- ϕ 1/2\"/>	NOT REQUIRED
2A	4- ϕ 1/2\"/>	NOT REQUIRED
2B	4- ϕ 1/2\"/>	NOT REQUIRED
3	4- ϕ 1/2\"/>	NOT REQUIRED
4	4- ϕ 1/2\"/>	NOT REQUIRED

*SEE ANCHORING INSTRUCTION DRAWING ANC-9001.

HARDWARE KIT: HK-0006

NO.:	DESCRIPTION:	QTY.:
10	3/8\"/>	4
9	3/8\"/>	13
8	3/8\"/>	13
7	3/8\"/>	1
6	3/8\"/>	14
5	3/8\"/>	8

NO.:	DESCRIPTION:	QTY.:	PART NO.:
4	BATTERY RAIL INSULATION KIT	1	RB28S-BRI
3	ADJUSTABLE BATTERY RAIL	4	RB28-ABR
2	REAR SUPPORT BRACE	4	RB28S-B
1	END FRAME	2	RB28S-RF

REVISIONS			DATE:
NO.	DATE	BY	03/15/01
A			SCALE:
B			NONE
C			DRAWN BY:
D			Luis
E			NOT VALID UNLESS APPROVED BY:
F			

BR28S ASSEMBLY DRAWING TWO TIER
SEISMIC ZONE 1-4 CERTIFIED BATTERY RACK

DRAWING NO.: RB28S