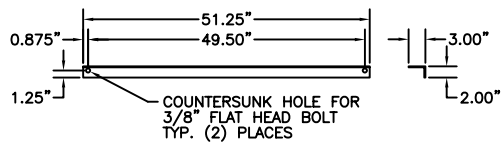
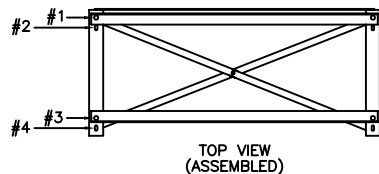


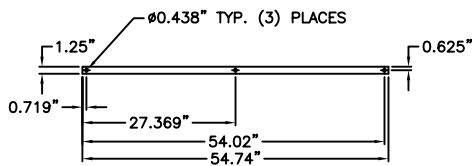
RACK ASSEMBLY INSTRUCTIONS



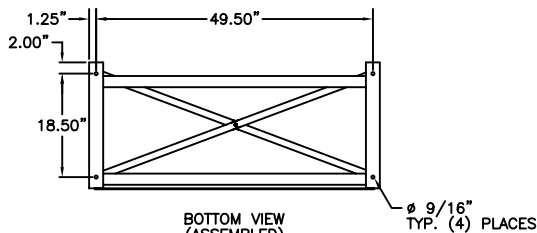
ADJUSTABLE BATTERY RAIL (7 GAUGE)



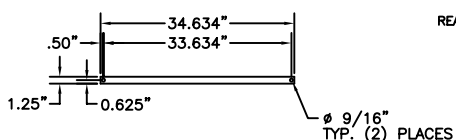
TOP VIEW (ASSEMBLED)



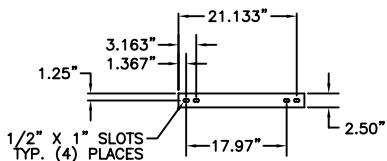
SEISMIC SUPPORT BEAM (3/16" THICKNESS)



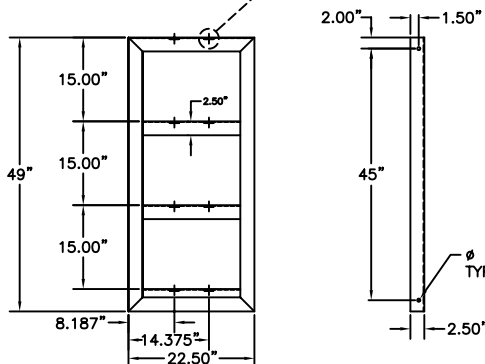
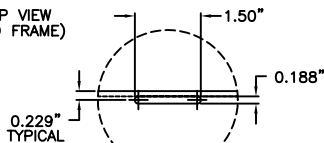
BOTTOM VIEW (ASSEMBLED)



REAR SUPPORT BRACE (3/16" THICKNESS)



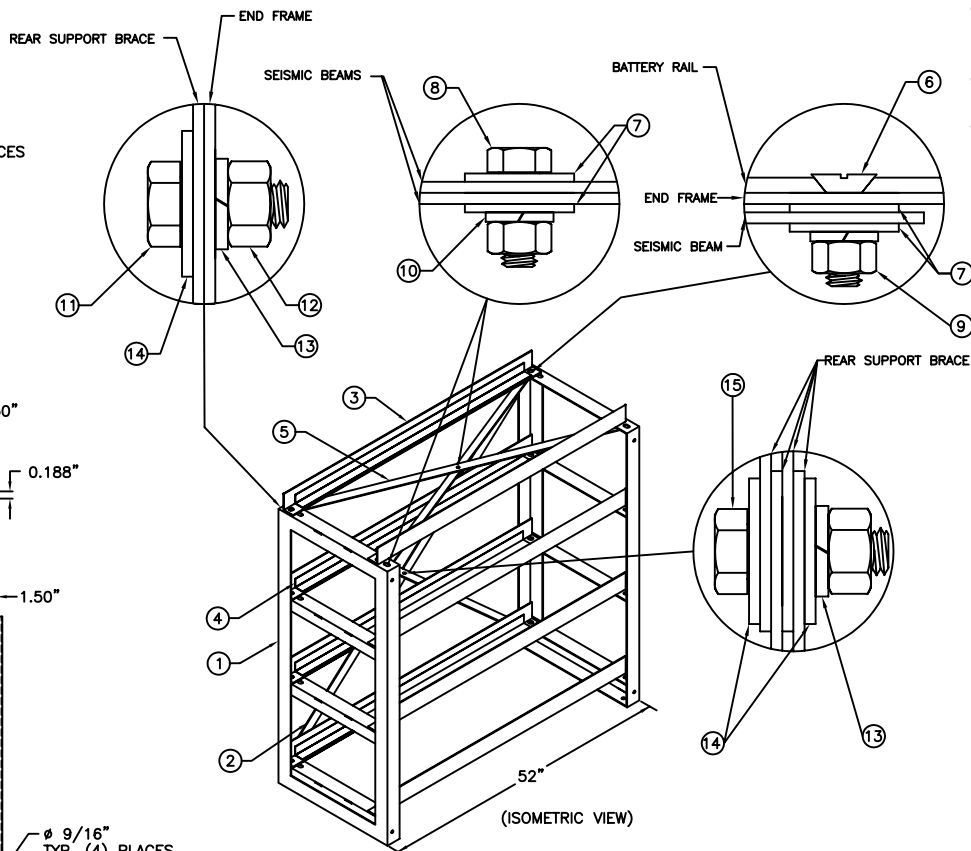
TOP VIEW (END FRAME)



SIDE VIEW (END FRAME)

BACK VIEW (END FRAME)

FRAME (10 GA STEEL)



(ISOMETRIC VIEW)

- READ ALL INSTRUCTIONS FULLY BEFORE ATTEMPTING TO INSTALL OR SET UP RACKS.
- (A) CHECK RECEIVED PARTS AGAINST PARTS LIST BELOW.
- (B) RACK LOCATION SHOULD:
 1. AWAY FROM OUTSIDE SOURCES OF HEAT (DIRECT SUN-LIGHT, RADIATORS, STEAM PIPES ETC.)
 2. ON LEVEL GROUND.
 3. EASILY ACCESSIBLE FOR CELL READINGS.
- (C) MARK LOCATION ON FLOOR AND POSITION FRAMES.
- (D) INSTALL BRACES ON TO FRAMES AND HAND TIGHTEN NUTS.
- (E) INSTALL RAILS IN APPROPRIATE POSITION FOR BATTERY SYSTEM TO BE USED AND HAND TIGHTEN NUTS. ALL RAILS ARE TO BE INSTALLED ON THE #1 & #3 HOLES, AS SHOWN IN THE TOP VIEW.
- (F) CHECK THAT RAILS AND BRACES ARE IN CORRECT POSITION AND SQUARE RAIL WITH FRAME.
- (G) INSTALL RAIL INSULATION ON BOTH INSIDE SURFACES OF THE RAIL MAKING SURE THEY MEET AT THE BEND IN THE RAIL.
- (H) TIGHTEN ALL NUTS TO A 30 FT/LB TORQUE VALUE STARTING WITH BRACES FIRST, THEN RAILS.
- (I) *BOLT FRAMES TO FLOOR. FOR UBC 97 ZONE FOUR CERTIFIED RACKS, A MINIMUM OF 6" OF SPACING IS NEEDED AROUND ALL SIDES OF RACK.
- (J) ALL MOUNTING SLOTS ARE 1/2" X 1" AND SUPPLIED WITH 3/8" HARDWARE KIT.
- (K) ALL RACKS ARE MADE OF STEEL ANGLE SUPPORTS AND ARE PAINTED WITH A TEXTURED IBM WHITE ELECTROSTATIC POWDER COAT.

SEISMIC ZONE	*ANCHORING COMPONENTS	SEISMIC SUPPORT BEAMS
1	4-- ϕ 1/2"x6" ROD WITH E12 EPOXY CAPSULES	NOT REQUIRED
2A	4-- ϕ 1/2"x6" ROD WITH E12 EPOXY CAPSULES	REQUIRED
2B	4-- ϕ 1/2"x6" ROD WITH E12 EPOXY CAPSULES	REQUIRED
3	4-- ϕ 1/2"x6" ROD WITH E12 EPOXY CAPSULES	REQUIRED
4	4-- ϕ 1/2"x6" ROD WITH E12 EPOXY CAPSULES	REQUIRED

*SEE ANCHORING INSTRUCTIONS DRAWING ANC-9001.

HARDWARE KIT: HK-0008

NO.:	DESCRIPTION:	QTY.:
15	1/2" X 1 1/2" HEX HEAD SCREW	1
14	1/2" FLAT WASHER	6
13	1/2" SPLIT LOCK WASHER	5
12	1/2" HEX NUT	5
11	1/2" X 1 1/4" HEX HEAD SCREW	4
10	3/8" SPLIT LOCK WASHER	21
9	3/8" HEX NUT	21
8	3/8" X 1 1/2" HEX HEAD SCREW	5
7	3/8" FLAT WASHER	30
6	3/8" X 1" COUNTERSUNK FLAT HEAD SCREW	16

NO.:	DESCRIPTION:	QTY.:	PART NO.:
5	SEISMIC SUPPORT BEAMS	2	RB52-SSB
4	BATTERY RAIL INSULATION KIT	1	RB52-4T-BRI
3	ADJUSTABLE BATTERY RAIL	8	RB52-ABR
2	REAR SUPPORT BRACE	4	RB52-4T-B
1	END FRAME	2	RB52-4T-RF

REVISIONS			DATE:	DRAWN BY:	SCALE:	DRAWING NO.:
NO.	DATE	BY	03/15/11			
C				Luis	NONE	RB52-4T ASSEMBLY DRAWING FOUR TIER SEISMIC ZONE 1-4 CERTIFIED BATTERY RACK
D						
E						
F						
G						
H						



BR52-4T ASSEMBLY DRAWING FOUR TIER SEISMIC ZONE 1-4 CERTIFIED BATTERY RACK

RB52-4T