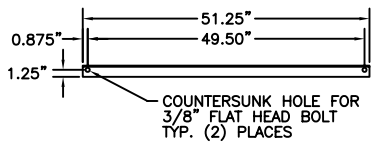
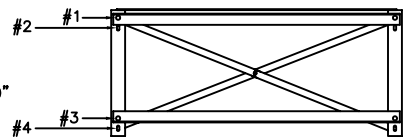


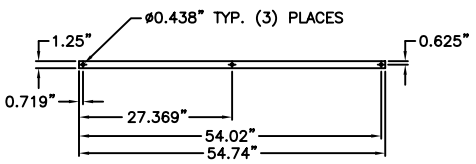
**RACK ASSEMBLY INSTRUCTIONS**



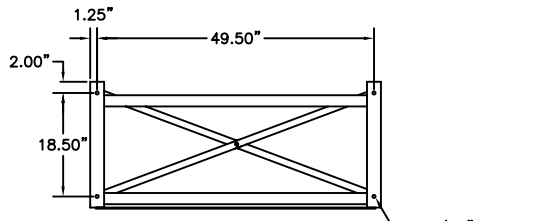
ADJUSTABLE BATTERY RAIL (7 GAUGE)



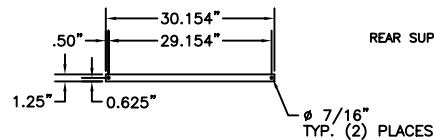
TOP VIEW (ASSEMBLED)



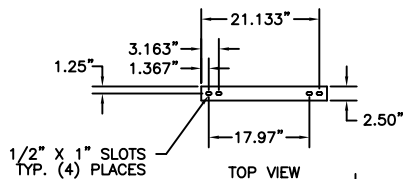
SEISMIC SUPPORT BEAM (3/16" THICKNESS)



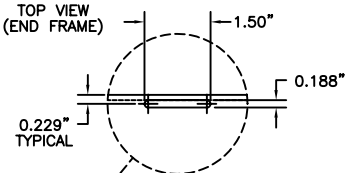
BOTTOM VIEW (ASSEMBLED)



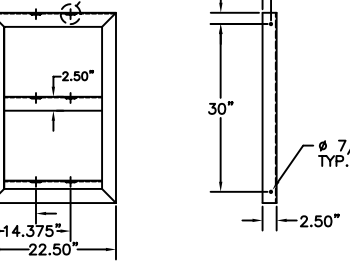
REAR SUPPORT BRACE (3/16" THICKNESS)



TOP VIEW (END FRAME)

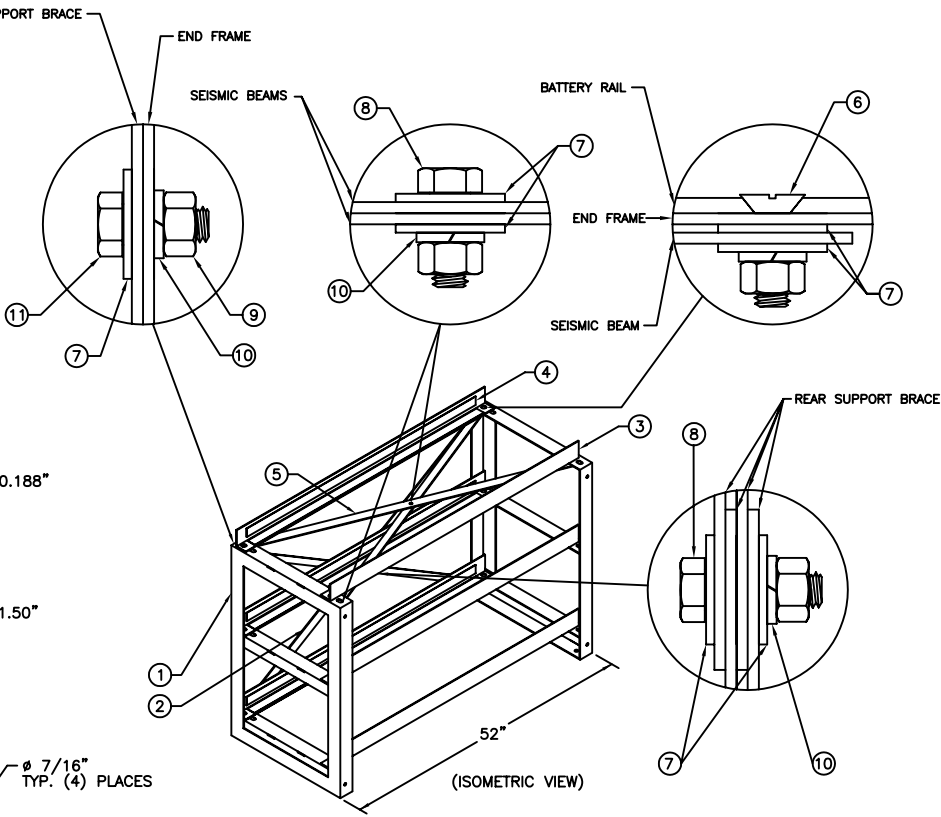


SIDE VIEW (END FRAME)



BACK VIEW (END FRAME)

FRAME (10 GA STEEL)



(ISOMETRIC VIEW)

- READ ALL INSTRUCTIONS FULLY BEFORE ATTEMPTING TO INSTALL OR SET UP RACKS.
- (A) CHECK RECEIVED PARTS AGAINST PARTS LIST BELOW.
- (B) RACK LOCATION SHOULD:
  1. AWAY FROM OUTSIDE SOURCES OF HEAT (DIRECT SUN-LIGHT, RADIATORS, STEAM PIPES ETC.)
  2. ON LEVEL GROUND.
  3. EASILY ACCESSIBLE FOR CELL READINGS.
- (C) MARK LOCATION ON FLOOR AND POSITION FRAMES.
- (D) INSTALL BRACES ON TO FRAMES AND HAND TIGHTEN NUTS.
- (E) INSTALL RAILS IN APPROPRIATE POSITION FOR BATTERY SYSTEM TO BE USED AND HAND TIGHTEN NUTS. ALL RAILS ARE TO BE INSTALLED ON THE #1 & #3 HOLES, AS SHOWN IN THE TOP VIEW.
- (F) CHECK THAT RAILS AND BRACES ARE IN CORRECT POSITION AND SQUARE RAIL WITH FRAME.
- (G) INSTALL RAIL INSULATION ON BOTH INSIDE SURFACES OF THE RAIL MAKING SURE THEY MEET AT THE BEND IN THE RAIL.
- (H) TIGHTEN ALL NUTS TO A 30 FT/LB TORQUE VALUE STARTING WITH BRACES FIRST, THEN RAILS.
- (I) \*BOLT FRAMES TO FLOOR. FOR UBC 97 ZONE FOUR CERTIFIED RACKS, A MINIMUM OF 6" OF SPACING IS NEEDED AROUND ALL SIDES OF RACK.
- (J) ALL MOUNTING SLOTS ARE 1/2" X 1" AND SUPPLIED WITH 3/8" HARDWARE KIT.
- (K) ALL RACKS ARE MADE OF STEEL ANGLE SUPPORTS AND ARE PAINTED WITH A TEXTURED IBM WHITE ELECTROSTATIC POWDER COAT.

NOTE: A MINIMUM OF 6" OF SPACE IS NEEDED AROUND EACH SIDE OF RACK IN ORDER TO MEET UBC 97 SEISMIC CRITERIA.

SEISMIC ZONE	*ANCHORING COMPONENTS	SEISMIC SUPPORT BEAMS
1	4-Ø1/2"x6" ROD WITH E12 EPOXY CAPSULES	NOT REQUIRED
2A	4-Ø1/2"x6" ROD WITH E12 EPOXY CAPSULES	REQUIRED
2B	4-Ø1/2"x6" ROD WITH E12 EPOXY CAPSULES	REQUIRED
3	4-Ø1/2"x6" ROD WITH E12 EPOXY CAPSULES	REQUIRED
4	4-Ø1/2"x6" ROD WITH E12 EPOXY CAPSULES	REQUIRED

\*SEE ANCHORING INSTRUCTION DRAWING ANC-9001.

HARDWARE KIT: HK-0007		
11	3/8" X 1 1/4" HEX HEAD SCREW	4
10	3/8" SPLIT LOCK WASHER	22
9	3/8" HEX NUT	22
8	3/8" X 1 1/2" HEX HEAD SCREW	6
7	3/8" FLAT WASHER	32
6	3/8" X 1" COUNTERSUNK FLAT HEAD SCREW	12
NO.:	DESCRIPTION:	QTY.:

5	SEISMIC SUPPORT BEAMS	2	RB52-SSB
4	BATTERY RAIL INSULATION KIT	1	RB52T-BRI
3	ADJUSTABLE BATTERY RAIL	6	RB52-ABR
2	REAR SUPPORT BRACE	4	RB52T-B
1	END FRAME	2	RB52T-RF
NO.:	DESCRIPTION:	QTY.	PART NO.

REVISIONS		DATE:
NO.	DATE	BY
A		
B		
C		
D		
E		
F		

DATE: 03/15/11  
 SCALE: NONE  
 DRAWN BY: Luis  
 NOT VALID UNLESS APPROVED BY:

BR52T ASSEMBLY DRAWING THREE TIER SEISMIC ZONE 1-4 CERTIFIED BATTERY RACK  
 DRAWING NO.: RB52T