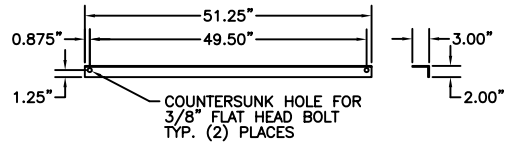
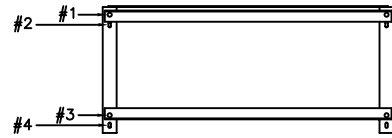


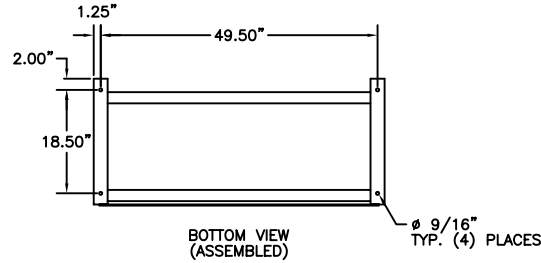
RACK ASSEMBLY INSTRUCTIONS



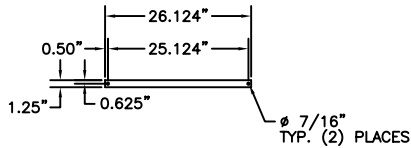
BATTERY RAIL (7 GAUGE)



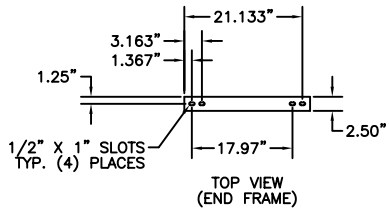
TOP VIEW (ASSEMBLED)



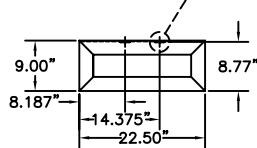
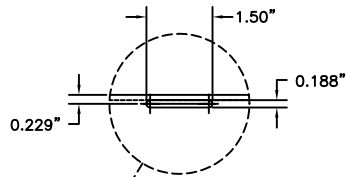
BOTTOM VIEW (ASSEMBLED)



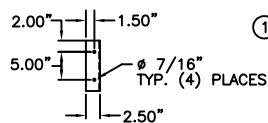
REAR SUPPORT BRACE (3/16" THICKNESS)



TOP VIEW (END FRAME)

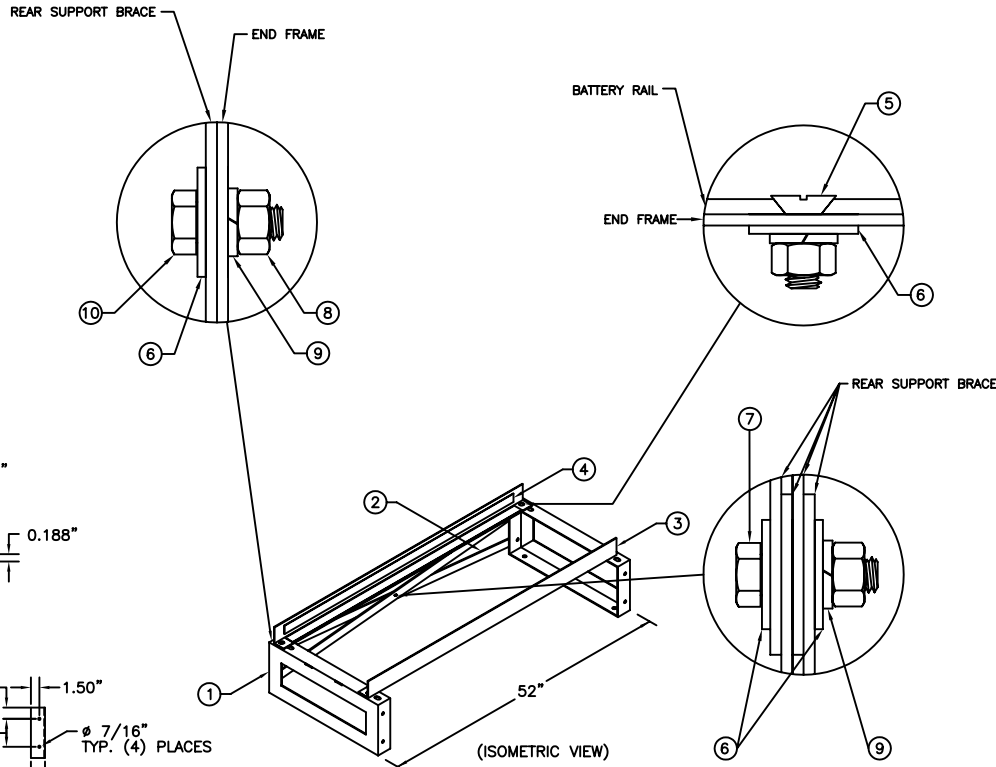


SIDE VIEW (END FRAME)



BACK VIEW (END FRAME)

FRAME (10 GA STEEL)



- READ ALL INSTRUCTIONS FULLY BEFORE ATTEMPTING TO INSTALL OR SET UP RACKS.
- (A) CHECK RECEIVED PARTS AGAINST PARTS LIST BELOW.
- (B) RACK LOCATION SHOULD:
 1. AWAY FROM OUTSIDE SOURCES OF HEAT (DIRECT SUN-LIGHT, RADIATORS, STEAM PIPES ETC.)
 2. ON LEVEL GROUND.
 3. EASILY ACCESSIBLE FOR CELL READINGS.
- (C) MARK LOCATION ON FLOOR AND POSITION FRAMES.
- (D) INSTALL BRACES ON TO FRAMES AND HAND TIGHTEN NUTS.
- (E) INSTALL RAILS IN APPROPRIATE POSITION FOR BATTERY SYSTEM TO BE USED AND HAND TIGHTEN NUTS.
- (F) CHECK THAT RAILS AND BRACES ARE IN CORRECT POSITION AND SQUARE RAIL WITH FRAME.
- (G) INSTALL RAIL INSULATION ON BOTH INSIDE SURFACES OF THE RAIL MAKING SURE THEY MEET AT THE BEND IN THE RAIL.
- (H) TIGHTEN ALL NUTS TO A 30 FT/LB TORQUE VALUE STARTING WITH BRACES FIRST, THEN RAILS.
- (I) *BOLT FRAMES TO FLOOR, FOR UBC 97 ZONE FOUR CERTIFIED RACKS, A MINIMUM OF 6" OF SPACING IS NEEDED AROUND ALL SIDES OF RACK.
- (J) ALL MOUNTING SLOTS ARE 1/2" X 1" AND SUPPLIED WITH 3/8" HARDWARE KIT.
- (K) ALL RACKS ARE MADE OF STEEL ANGLE SUPPORTS AND ARE PAINTED WITH A TEXTURED IBM WHITE ELECTROSTATIC POWDER COAT.

NOTE: A MINIMUM OF 6" OF SPACE IS NEEDED AROUND EACH SIDE OF RACK IN ORDER TO MEET UBC 97 SEISMIC CRITERIA.

SEISMIC ZONE	*ANCHORING COMPONENTS	SEISMIC SUPPORT BEAMS
1	4- ϕ 1/2"x6" ROD WITH E12 EPOXY CAPSULES	NOT REQUIRED
2A	4- ϕ 1/2"x6" ROD WITH E12 EPOXY CAPSULES	NOT REQUIRED
2B	4- ϕ 1/2"x6" ROD WITH E12 EPOXY CAPSULES	NOT REQUIRED
3	4- ϕ 1/2"x6" ROD WITH E12 EPOXY CAPSULES	NOT REQUIRED
4	4- ϕ 1/2"x6" ROD WITH E12 EPOXY CAPSULES	NOT REQUIRED

*SEE ANCHORING INSTRUCTION DRAWING ANC-9001.

HARDWARE KIT: HK-0005

NO.:	DESCRIPTION:	QTY.:
10	3/8" X 1 1/4" HEX HEAD SCREW	4
9	3/8" SPLIT LOCK WASHER	9
8	3/8" HEX NUT	9
7	3/8" X 1 1/2" HEX HEAD SCREW	1
6	3/8" FLAT WASHER	10
5	3/8" X 1" COUNTERSUNK FLAT HEAD SCREW	4
NO.:	DESCRIPTION:	QTY.:

4	BATTERY RAIL INSULATION KIT	1	RB52-BRI
3	ADJUSTABLE BATTERY RAIL	2	RB52-ABR
2	REAR SUPPORT BRACE	4	RB52-B
1	END FRAME	2	RB52-RF
NO.:	DESCRIPTION:	QTY.:	PART NO.:

REVISIONS			DATE:
NO.	DATE	BY	03/15/11
A			SCALE:
B			NONE
C			DRAWN BY:
D			Luis
E			NOT VALID UNLESS APPROVED BY:
F			



RB52 ASSEMBLY DRAWING ONE TIER SEISMIC ZONE 1-4 CERTIFIED BATTERY RACK

DRAWING NO.:

RB52