



## SCP12500 12V 50Ah(20hr)

Rechargeable AGM Lead Acid batteries. Battery is completely sealed and is maintenance-free, leak proof, and can be used in any position. Is approved for transportation by Air, DOT, IATA, and FAA.

### General Features

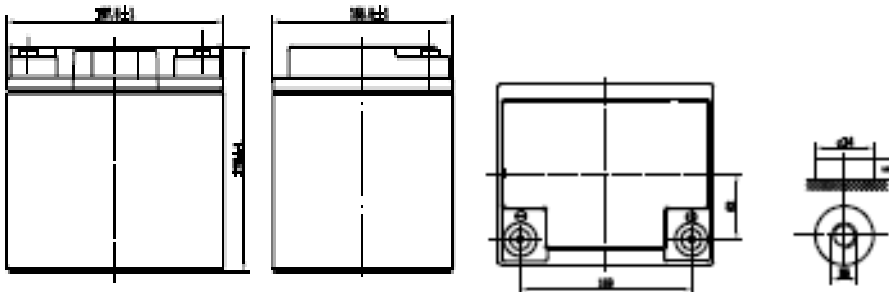
- Absorbent Glass Mat (AGM) technology for efficient gas recombination of up to 99%.
- Not restricted for air transportation, complies with IATA/ICAO special provision 67
- UL-recognized component
- Computer designed lead, calcium tin alloy grid for high power density
- Long service life, float or cyclic applications
- Maintenance-Free
- Low self-discharge

### Dimensions and Weight

Length (mm / inch)	197.5/7.78
Width (mm / inch)	165.5/6.52
Height (mm / inch)	170/6.69
Total Height (mm / inch)	170/6.69
Aprox. Weight (kg / lbs)	14.6/32.2
Terminal Type/size	M6

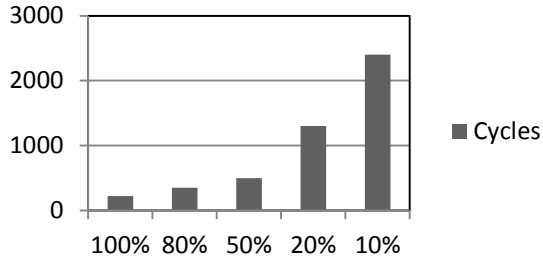
### Performance Characteristics

Nominal voltage	12
Number of cells	6
Nominal Capacity 77° F (25°C)	
100 hour rate	1.80V/cell 52.6Ahr
24 hour rate	1.80V/cell 50.1Ahr
10 hour rate	1.80V/cell 45.0Ahr
5 hour rate	1.75V/cell 36.9Ahr
1 hour rate	1.60V/cell 28.0Ahr
Self-Discharge	3% of capacity per month at 20°C
Operating Temperature Range	
Discharge	-20 to +60°C
Charge	-10 to +60°C
Storage	-20 to +60°C
Max Discharge Current	330A
Short Circuit Current	850A
Charge Methods: Constant Voltage Charge 77°F (25°C)	
<b>Cycle use</b>	2.40-2.45VPC
Maximum charging current	0.33C 20hr
Temperature compensation	-30mV/°C
<b>Standby use</b>	2.26-2.30VPC
Temperature compensation	-20mV/°C

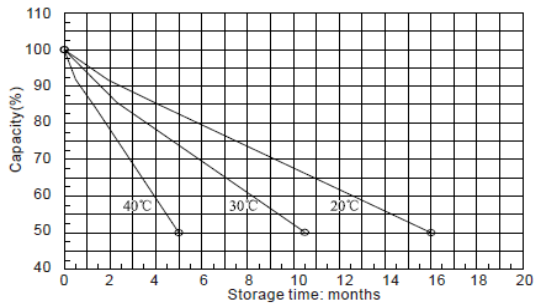


# SCP12500 12V 50Ah(20hr)

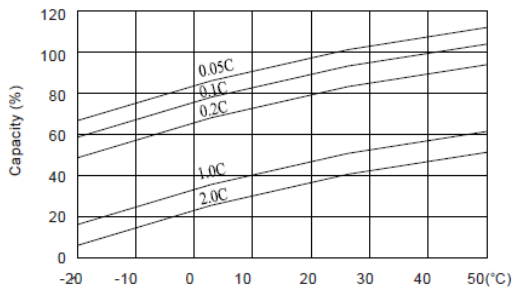
## Cycle Life SCP Series



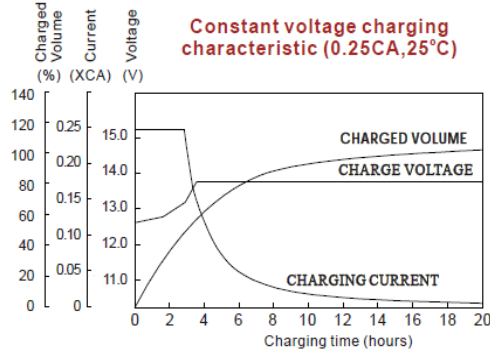
## Self-discharge characteristic



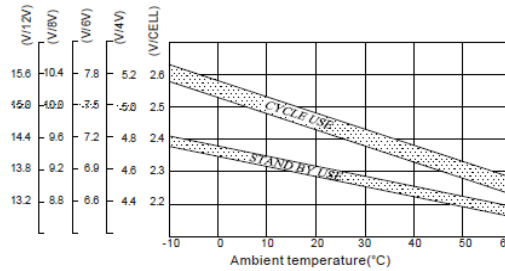
## Temperature effects on capacity



## Constant voltage charging characteristic (0.25CA, 25°C)



## Relationship between charging voltage and temperature



## Temperature effects on float life

