

Valve Regulated Lead Acid Battery

Maintenance-Free Sealed Lead Acid Battery.

Absorbent Glass Mat (AGM) technology for efficient gas recombination of up to 99%.

Design for Standby Power Applications

【Design Life】

Up to 10 Years in Standby Service at 25°C

Eurobat (20°C) : 10-12 years, Long Life

【Operating Temperature Range】

Nominal Operating Temperature : 25°C (77°F)

Discharge : -15°C ~ 50°C (5°F~122°F)

Charge: -15°C ~ 40°C (5°F~104°F)

Storage: -15°C ~ 40°C (5°F~104°F)

【Float Charging Voltage】

13.5 ~ 13.8 VDC/Unit at 25°C (77°F)

【Equalization Charging Voltage】

14.4 ~ 15.0 VDC/Unit at 25°C (77°F)

【Self Discharge】

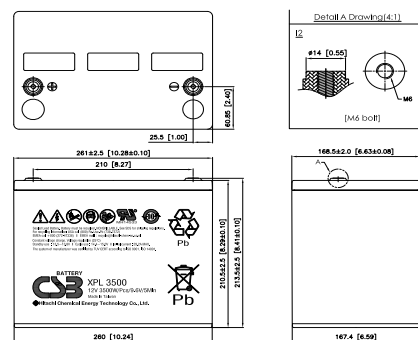
Less than 10% after 90 days, can be stored up to 6 months at 25°C (77°F);

Fully recharging is required before usage, and charged sooner if stored at higher temperature than 25°C (77°F).

Specification

Design according with IEC 60896-21/22:2004

Nominal Voltage	12V (6 cells per unit)	
Nominal Capacity	3500W @5min-rate to 1.60V per PCS @25°C (77°F)	
Weight	Approx. 25.70 Kg (56.64 lbs)	
Maximum Discharge Current	800A (5sec)	
Internal Resistance	Approx. 3.70 mΩ	
Short Circuit Current	--	
Maximum Charge Current	32A	
Terminal types	I2 thread lead alloy terminal to accept M6 bolt	
Terminal hardware Torque	138.6 Kgf-cm / 120.3 Lbf-in / 13.58 N-m	
Container Material	Flame Retardant Polypropylene (UL 94-V0)	
Dimensions	Length (L)	261.0±2.5 mm 10.28±0.10 inch
	Width (W)	168.5±2.0 mm 6.63±0.08 inch
	Container Height (h)	210.5±2.5 mm 8.29±0.10 inch
	Overall Height (H)	213.5±2.5 mm 8.41±0.10 inch



Constant Current Discharge Characteristics Unit: A (25°C, 77°F)

F.V/Time	2MIN	4MIN	5MIN	6MIN	8MIN	10MIN	15MIN	20MIN	30MIN	45MIN	60MIN	90MIN
1.60V												
1.67V												
1.70V												
1.75V												
1.80V												
1.85V												

Constant Power Discharge Characteristics Unit: W (25°C, 77°F)

F.V/Time	2MIN	4MIN	5MIN	6MIN	8MIN	10MIN	15MIN	20MIN	30MIN	45MIN	60MIN	90MIN
1.60V	4800	3862	3544	3304	2883	2539	1955	1573	1158	842	671	488
1.67V	4475	3593	3348	3160	2752	2457	1912	1547	1148	836	667	485
1.70V	4205	3464	3254	3074	2680	2406	1882	1528	1139	831	664	484
1.75V	3725	3242	3080	2856	2535	2284	1810	1481	1116	817	655	480
1.80V	3246	2996	2778	2612	2352	2130	1707	1407	1070	790	637	470
1.85V	3032	2601	2475	2349	2116	1906	1555	1292	995	743	603	450

**Preliminary spec sheet

Issued: 180213

Sales Offices

日立化成能源科技股份有限公司
 Hitachi Chemical Energy Technology Co., Ltd.

BUSINESS HEADQUARTERS

Tel: +886-2-2880-5600
 Fax: +866-2-2888-3300

USA OFFICE

Tel: +1-817-244-7777 / 1-(800)3-CSB-USA (272872)
 Fax: +1-817-244-4445

SHENZHEN OFFICE (CHINA)

Tel: +86-755-8831-6488, 8831-6775
 Fax: +86-755-8831-6075

EUROPE (EMEA) OFFICE

Tel: +31(0)180-418-140
 Fax: +31(0)180-418-327

SHANGHAI OFFICE (CHINA)

Tel: +86-21-5046-1622, 5046-0833
 Fax: +86-21-5046-1046

TAIPEI OFFICE

Tel: +886-2-2880-5600
 Fax: +866-2-2888-3300

BEIJING OFFICE (CHINA)

Tel: +86-10-5820-5336, 5820-5338
 Fax: +86-10-5820-3053

Recognized under UL 1989,
 and certified by ISO 9001, 14001.

